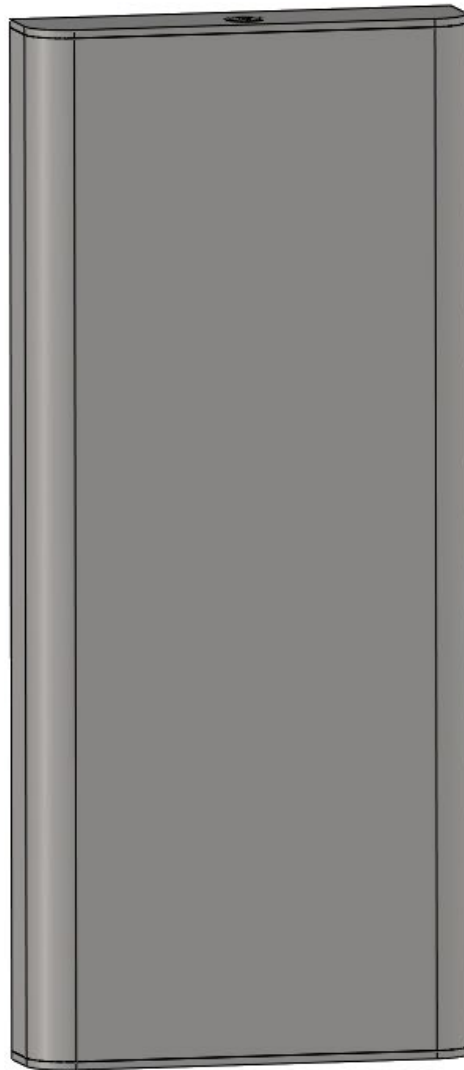


VEGA®

ITALIAN STYLE FOR LIFTS

LOP SURFACE



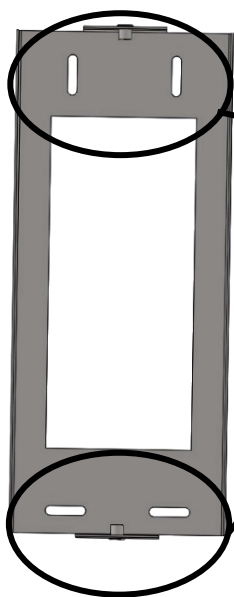
Assembly Instructions

Rev.01 - 09/05/2016

Package contents:

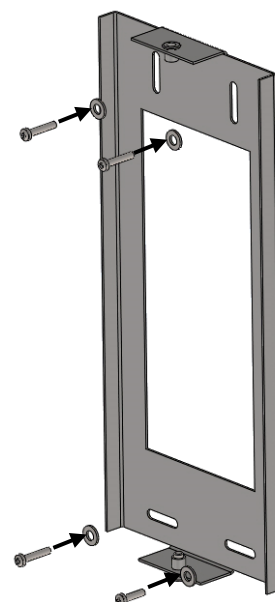
- [A] Back plate;
- [B] Front plate;
- [C] Wall fixing screw kit:
 - 4x Self-tapping screw $\text{Ø}3.9 \times 16\text{mm}$
 - 4x Self-tapping screw $\text{Ø}3.9 \times 32\text{mm}$
 - 4x Nylon wall plug $\text{Ø}6 \times 30\text{mm}$
- [D] LOP fixing screw kit:
 - 2x Metric screw $\text{Ø}4 \times 12\text{mm}$

STEP 1

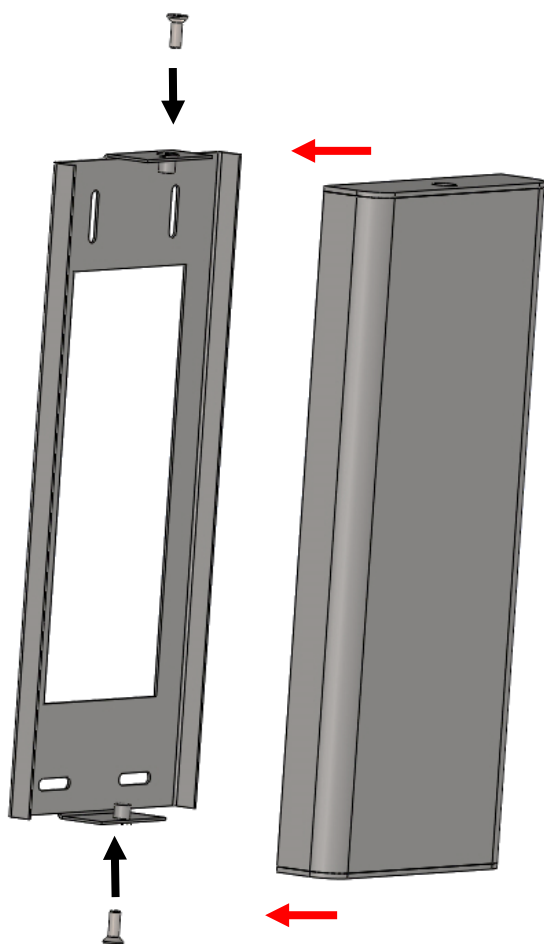


Place the back plate on the wall making sure that the slots are positioned as shown in the figure. Mark the holes on the slots and drill. If mounting on the wall, use the nylon wall plugs and the self-tapping screws $\text{Ø}3.9 \times 32\text{mm}$.

After drilling, fix the back plate to the wall, as shown in the figure, using the wall fixing screw kit [C].



STEP 2



After fixing the back plate to the wall, bring the front plate closer and fix it to the back plate with the LOP fixing screw kit [D] using an Allen key (as shown in the figure).

VEGA[®]

ITALIAN STYLE FOR LIFTS

VEGA STYLE LIFT S.r.l., Via Monte Vettore, 12
63845 Ponzano di Fermo (AP) Italy – P.Iva 02018560447
– Tel. +39.0734.631941 Fax +39. 0734.636098 –